



# THE CLUB CHAIR

Made by Generational Artisans





Solid Hard Wood Frames

## WE START IN NATURE

With Kiln-dried wood

Kiln-dried wood has been used for centuries due to the long drying process that allows the wood to be sturdier, and more durable than any alternatives on the market. Making it ideal for furniture that will be passed down for generations.







Jute Webbing



Vegetal Horse Hair

## WE USE RAW MATERIAL

Transforming natural elements

Each club chair is a compilation of raw materials taken from the French countryside. Raw sheep skin, vegetal horse hair, and jute webbing are handled by expert craftsmen who see the pieces from start to finish.



Sheeps Skin



Finished Patina

## OUR EXPERTS BUILD STRONG FRAMES

Built and waxed by hand

Our craftsmen are experts at what they do, being multigenerational craftsman who learned how to build and assemble chairs from their own fathers.





Finished Patina

## OUR CRAFTSMEN HAND DYE

Each club chair with organic dyes

After assembling the hardwood frames, raw leather, vegetal horsehair, and jute webbing, our craftsman hand dye the almost finished club chair in one of our signature colors. In addition to being hand dyed, the club chairs will also be hand waxed to ensure the dye and leather stay in good conditions for years to come.





# Contents

The Chair Club Introduction	3
Available Colors	5
Featured Works	
Chairs	7
Sofas	15
Ottomans	23





# THE CLUB CHAIR

Made by Generational Artisans

Meet The Club Chair, a brand inspired by the traditional furniture beloved by French royals. Our brand specializes in handcrafted club chairs made to last a lifetime. Each piece is meticulously handpainted and handcrafted with the finest materials by seasoned artisans. Made with 100% full-grain genuine sheepskin and hand-colored using traditional methods. Each piece exudes old-world charm and sophistication while maintaining modern-day comfort. The waxed finish gives each piece a beautiful shine and ensures its durability. The feather-filled cushions also include removable, easy-to-care-for covers. Inspired by classic French Antique styles, our Club chairs will elevate any room they are in, adding warmth and elegance to your living space.



Chairs



# CHOLET

The Cholet club chair, with its distinct round edges, embodies a harmonious blend of contemporary design and inviting comfort that suits any room decor.



## Dimensions

Width: 32"

Depth: 37"

Height: 31"

Seat Depth: 23"

Seat Height: 16"



# GRANDE SOLOGNE

The Grand Sologne club chair is a favorite due to its versatility. Its curved arms provide exceptional comfort and support when lounging, adding a touch of elegance to its already sophisticated design.



## Dimensions

Width: 36"

Depth: 35"

Height: 31"

Seat Depth: 23"

Seat Height: 18"



# CHITENAY

The Grand Chitney not only provides exceptional comfort and support, but also add a touch of elegance to its already sophisticated design.



## Dimensions

Width: 31"

Depth: 30"

Height: 27"

Seat Depth: 21"

Seat Height: 17"



# GRAND CHITENAY

The Grand Chitenay club chair is a beloved choice cherished for its classic design. The chair's sophisticated design exudes a touch of vintage charm, adding to its allure and making it a distinguished addition to any distinguished interior.



## Dimensions

Width: 32"

Depth: 37"

Height: 31"

Seat Depth: 23"

Seat Height: 16"





# LILLE

Like its namesake, the Lille club chair is understated yet elegant, pairing well in both large, high-ceiling spaces and dark, intimate offices.



## Dimensions

Width: 26"  
Depth: 28"  
Height: 28"  
Seat Depth: 23"  
Seat Height: 17"



# PETITE GIVERNY

The Petite Giverny club chair showcases a slim build complemented by a subtly rounded back, embodying a sophisticated and polished design.



## Dimensions

Width: 30"

Depth: 29"

Height: 29"

Seat Depth: 22"

Seat Height: 16"



# LYON

The Lyon club chair, with its distinct squared edges, is a modernized take on the traditional club chair, making it the ideal choice for contemporary living spaces.



## Dimensions

Width: 27"  
Depth: 30"  
Height: 28"  
Seat Depth: 21"  
Seat Height: 16"



# GIVERNY

The Giverny club chair is the rounder counterpart to its slimmer alternative. It pairs well next to a large window with a champagne glass or in a dark, intimate place with a cigar close at hand.



## Dimensions

Width: 27"

Depth: 30"

Height: 28"

Seat Depth: 21"

Seat Height: 16"





# GRANDE MOUSTACHE

Similar to its slimmer counterpart, the popular handpainted Grand Moustache club chair features a classic bow shape and rounded arms that pair well with a dark, academic aesthetic.



## Dimensions

Width: 36"

Depth: 35"

Height: 31"

Seat Depth: 23"

Seat Height: 18"



# MONTRESOR

Tall and slim, the Montresor club chair is stiff in appearance but comfortable in style, making it ideal for long afternoons spent discussing professional affairs.



## Dimensions

Width: 27"

Depth: 33"

Height: 31.5"

Seat Depth: 22"

Seat Height: 17"





Sofas

# LILLE



## Dimensions

Width 2-Seater: 57"

Depth: 28"

Height: 28"

Seat Depth: 23"

Seat Height: 17"



# PETITE GIVERNY



## Dimensions

Width 2-Seater: 57"

Depth: 28"

Height: 28"

Seat Depth: 23"

Seat Height: 17"





# GRAND CHITENAY



## Dimensions

Width 2-Seater: 65"

Width 3-Seater: 78"

Depth: 37"

Height: 31"

Seat Depth: 23"

Seat Height: 16"



# CHITENAY



## Dimensions

Width 2-Seater: 60"

Width 3-Seater: 71"

Depth: 30"

Height: 27"

Seat Depth: 21"

Seat Height: 17"



# MONTRESOR



## Dimensions

Width 2-Seater: 59"

Width 3-Seater: 71"

Depth: 33"

Height: 31.5"

Seat Depth: 22"

Seat Height: 17"

# GRANDE MOUSTACHE



## Dimensions

Width 2-Seater: 70"

Depth: 35"

Height: 31"

Seat Depth: 23"

Seat Height: 18"



# GIVERNY



## Dimensions

Width 2-Seater: 60"

Depth: 29"

Height: 29"

Seat Depth: 22"

Seat Height: 16"







Ottomans

# ROUND POUF

Our Round Pouf is an ideal addition for extra seating, a footrest, or even a small side table.



## Dimensions

Diameter: 17"  
Height: 18"



# FOOTSTOOL

Our Standard Footstool is made to match all our club chairs and sofas.



## Dimensions

Width: 16"  
Depth: 19.5"  
Height: 16.5"



# SQUARE POUF

Our Square Pouf is a compact and practical piece of furniture. Its simple square shape makes it an excellent choice as a footrest or an extra seat. Its versatility and space-saving design make it a handy addition to any room.



## Dimensions

Width: 20.5"

Depth: 20.5"

Height: 19.5"



# RECTANGLE OTTOMAN

Our Rectangular ottoman is a versatile furnishing, serving admirably as both a stylish coffee table and a functional footstool.



## Dimensions

Width: 19.5"

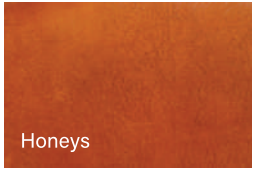
Depth: 27.5"

Height: 18"

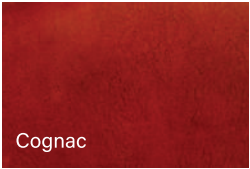


# Hand Colored Leather Options

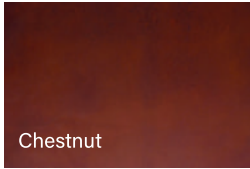




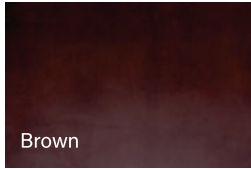
Honeys



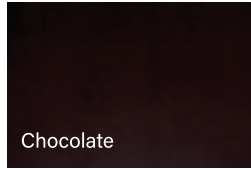
Cognac



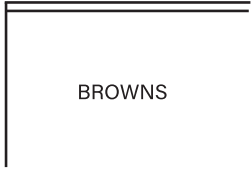
Chestnut



Brown



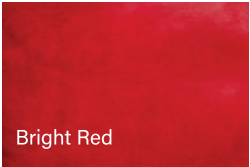
Chocolate



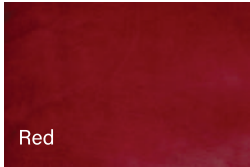
BROWNS



BROWNS



Bright Red



Red



Plum



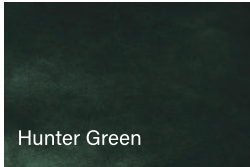
REDS



Yellow



English Green



Hunter Green



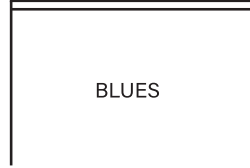
GREENS



Blue



Ink



BLUES



THE CLUB CHAIR  
NEW YORK DALLAS

20 W 20th St, Apt. 602  
New York, NY 10011  
<https://www.v-f.us/>  
1 (888) 633 - 7560